



Property Highlights

- 2-Story Freestanding Building
- Excellent visibility on Colonial Drive
- On-site parking with entry off Hillcrest Street and additional street parking
- Signage opportunities available

Location

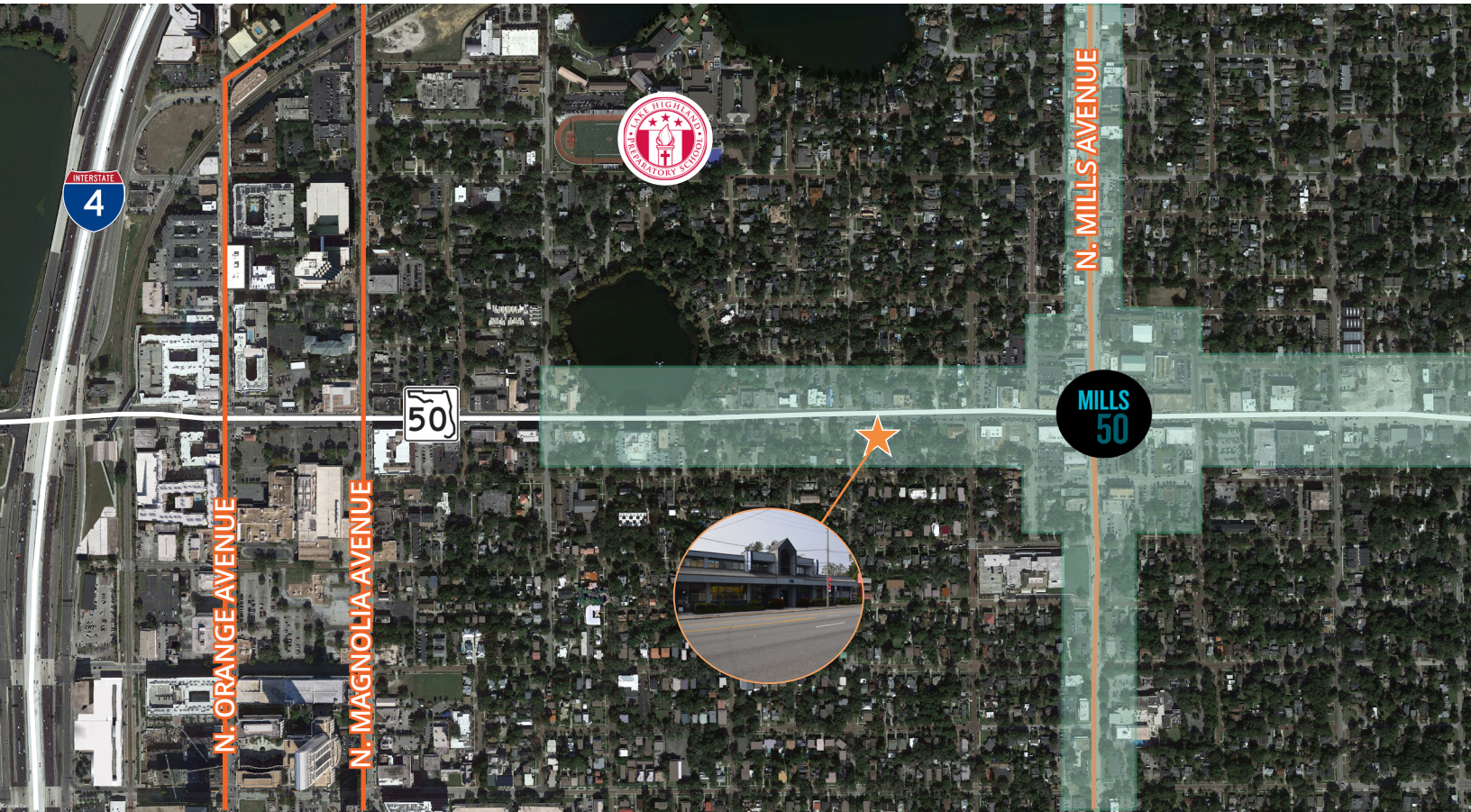
- Located in the highly desirable Mills 50 District at the corner of Colonial Drive and Summerlin Avenue
- Minutes from Interstate-4, S.R. 408, Mills 50 District, AdventHealth Village, Downtown Orlando, Thornton Park and Eola Park

Emily Zinaich, Senior Vice President
D 407 440 6641
C 407 230 8797
emily.zinaich@avisonyoung.com

**AVISON
YOUNG**

For Lease Colonial Business Center

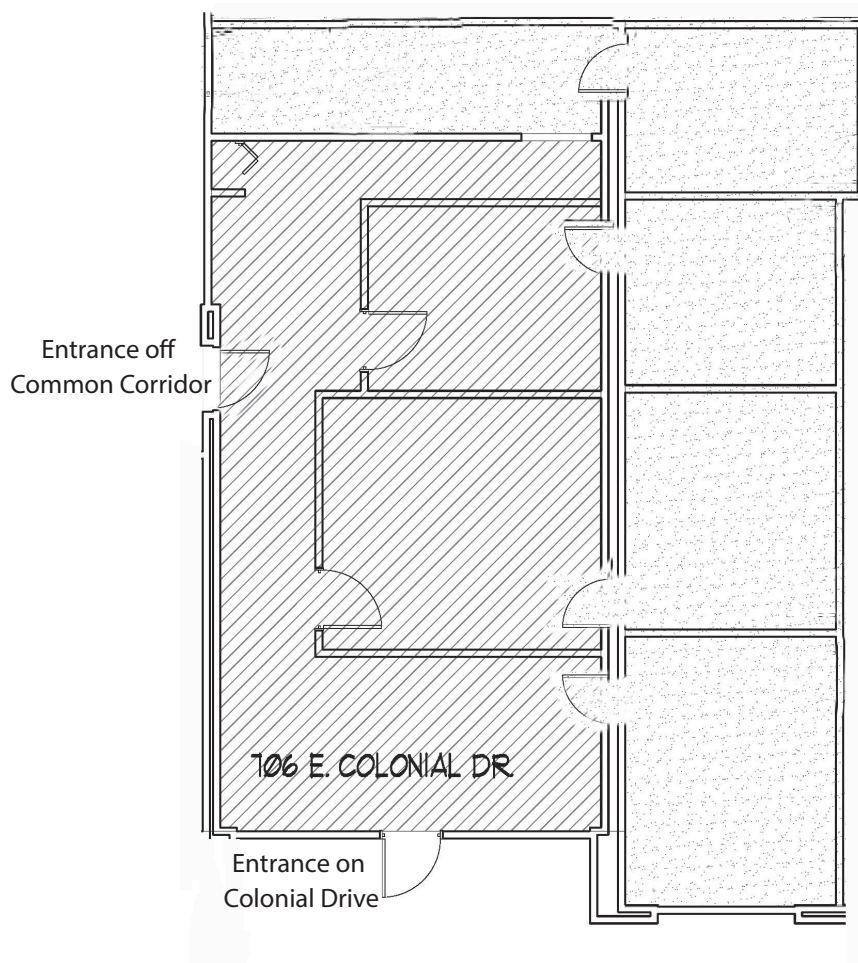
704-712 E. Colonial Drive
Orlando, FL 32803



Nearby Amenities

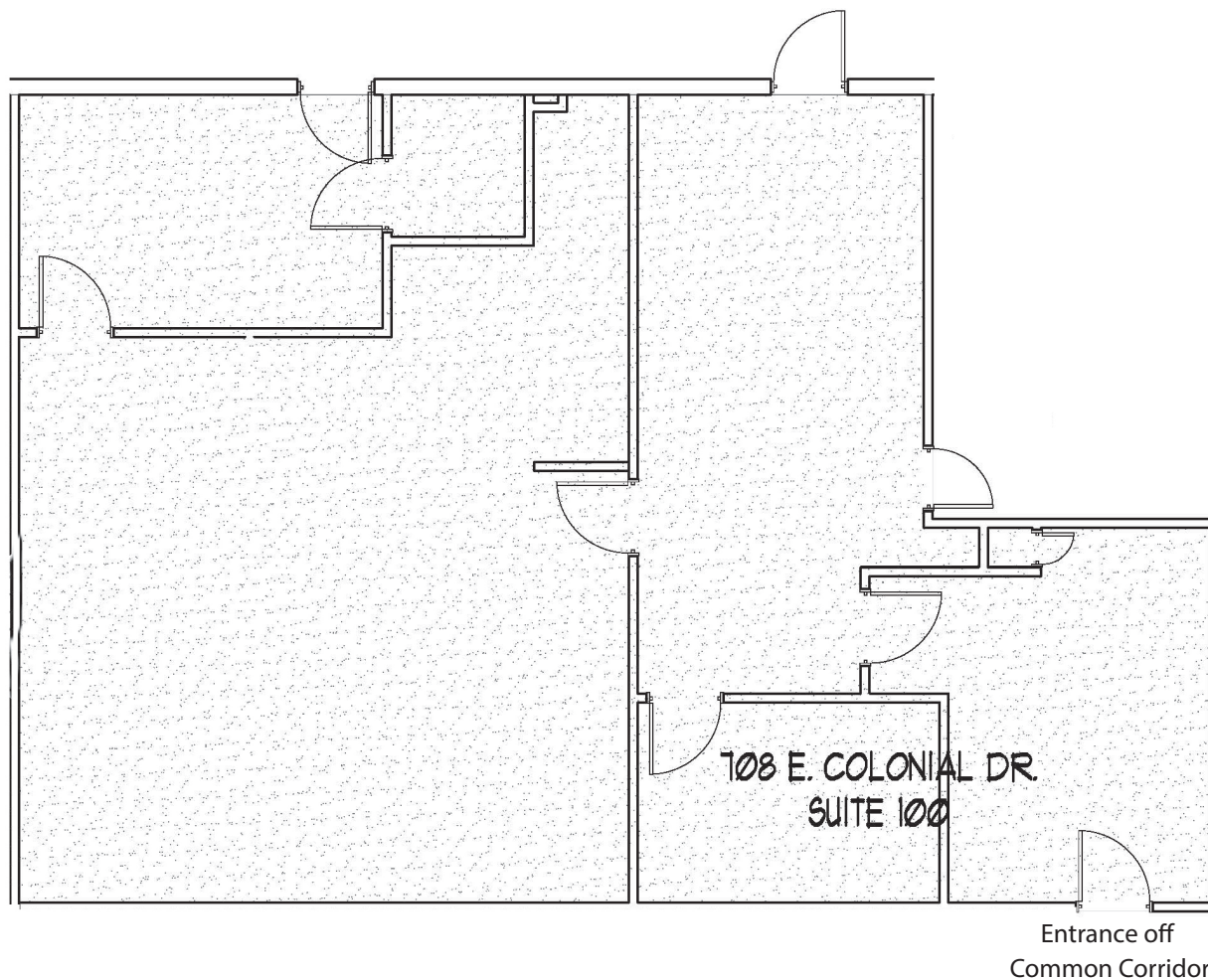


**Suite 706 - 1,240± rsf
First Floor**



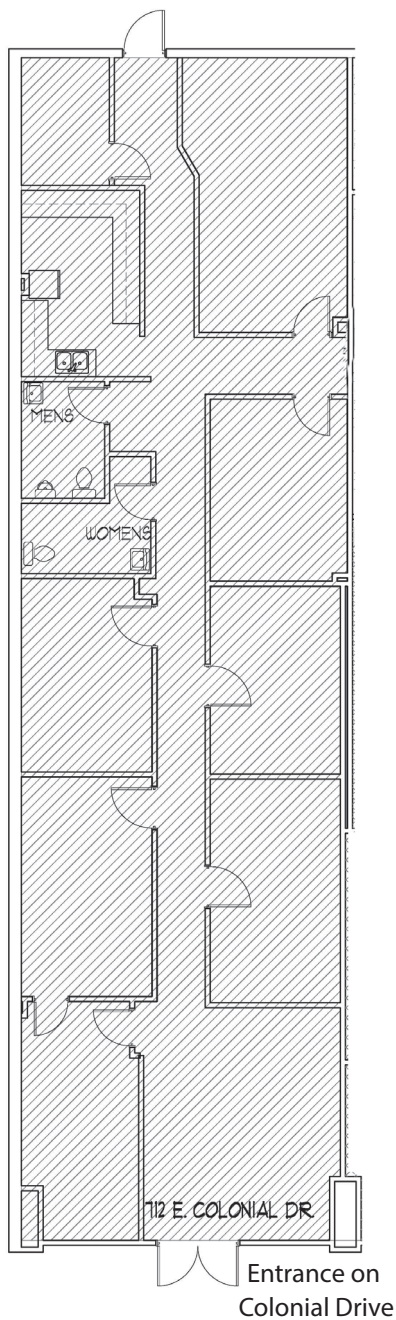
Emily Zinaich, Senior Vice President
D 407 440 6641
C 407 230 8797
emily.zinaich@avisonyoung.com

**Suite 708 - 1,694± rsf
First Floor**



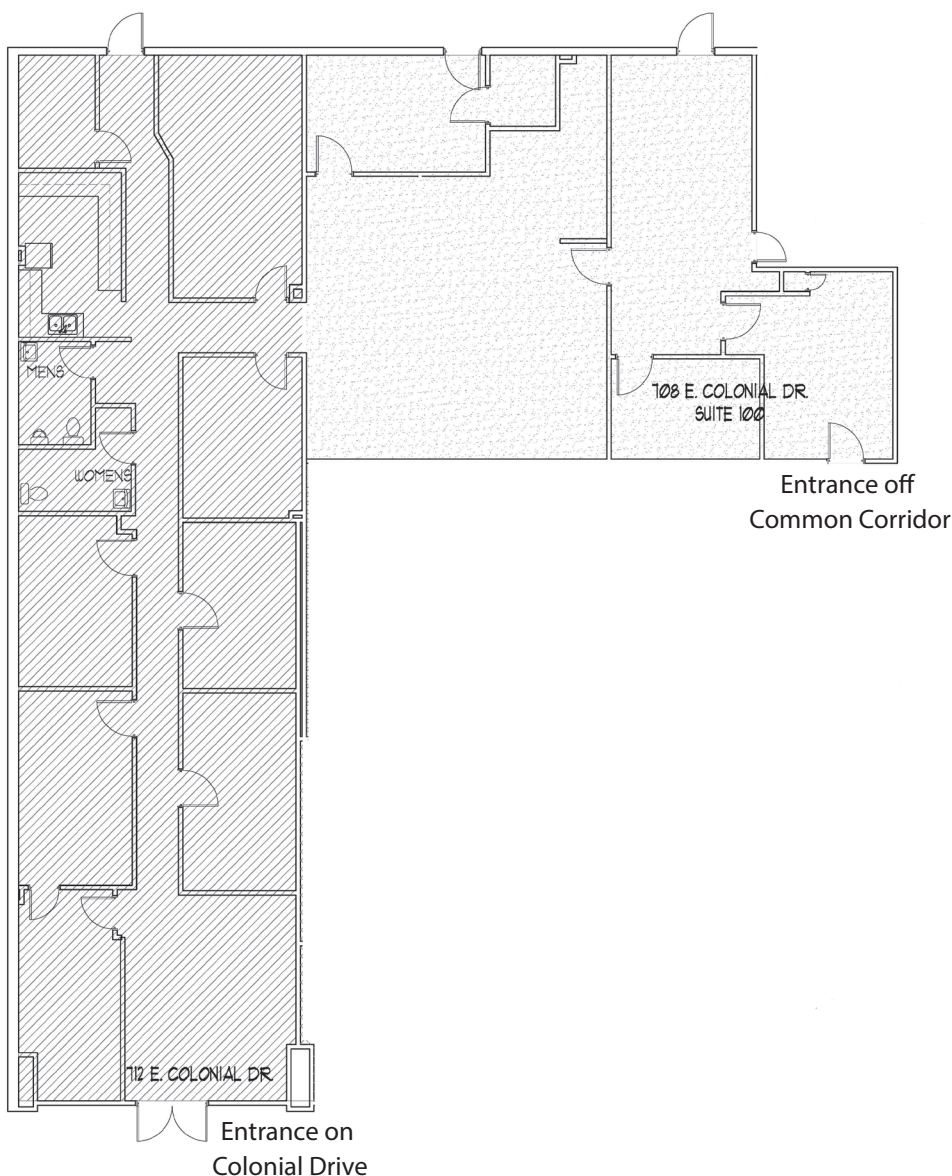
Emily Zinaich, Senior Vice President
D 407 440 6641
C 407 230 8797
emily.zinaich@avisonyoung.com

Suite 712 - 2,395± rsf



Emily Zinaich, Senior Vice President
D 407 440 6641
C 407 230 8797
emily.zinaich@avisonyoung.com

Suite 708 - 712 - 4,089± rsf
First Floor



Emily Zinaich, Senior Vice President
D 407 440 6641
C 407 230 8797
emily.zinaich@avisonyoung.com