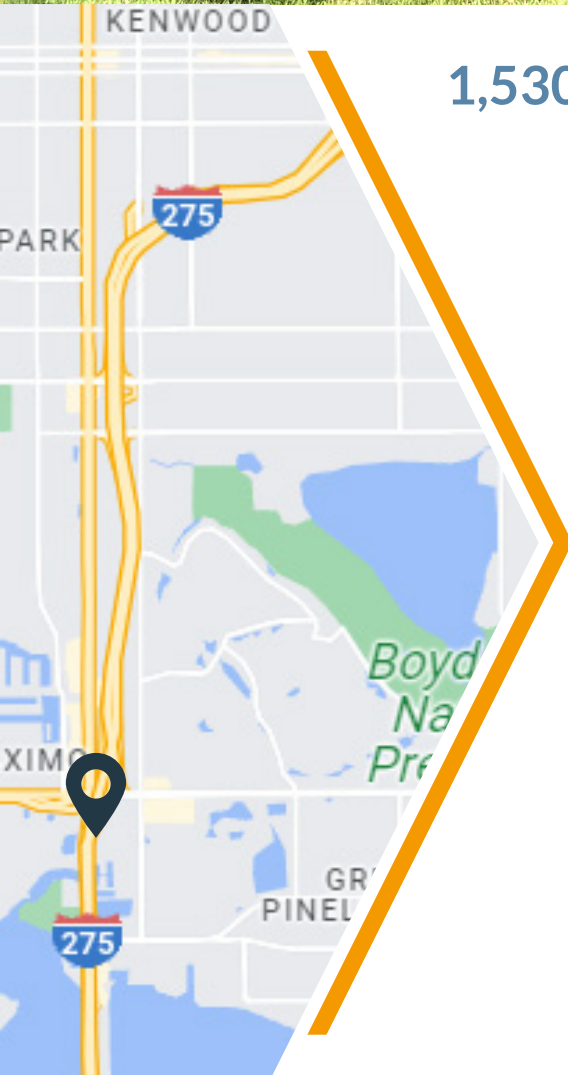


SKYWAY POINTE

4100 - 4116 34th St. S., St. Petersburg, FL 33711



1,530 SF END-CAP AVAILABLE IN ST. PETE

- » End-cap with road frontage for lease
- » 167 feet of frontage on 34th Street
- » Center renovation underway shortly
- » Located across the street from the brand new luxury apartments: Addison Skyway Marina (with 308 units) & Sur Club (with 296 units)
- » Located in the Skyway Marina district
- » Minutes from the Sunshine Skyway Bridge
- » 2022 34th Street Traffic Counts: 25,500 AADT

| Demographics | 1-mile | 3-mile | 5-mile |
|--------------------|----------|----------|----------|
| 2023 Population | 9,331 | 87,162 | 184,597 |
| Daytime Employment | 4,245 | 23,812 | 94,437 |
| Average HH Income | \$91,762 | \$78,307 | \$85,283 |
| Median Age | 47.4 | 44 | 47.2 |

Leasing Contact: Wanda De Boer | Managing Director - Retail Services
(Cell) 813-690-3020 | (Office) 813-269-0702 | wdeboer@rpm-realty.com



SKYWAY POINTE

4100 - 4116 34th St. S., St. Petersburg, FL 33711

34TH STREET SOUTH (U.S. HWY 19)



| Suite | Tenant | SF |
|-----------|---------------------------------|-------|
| 4100 | AVAILABLE | 1,530 |
| 4102 | Pinch-A-Penny | 3,500 |
| 4102A | AVAILABLE | 2,167 |
| 4110-4116 | Rightchoice Daycare & Preschool | 2,984 |



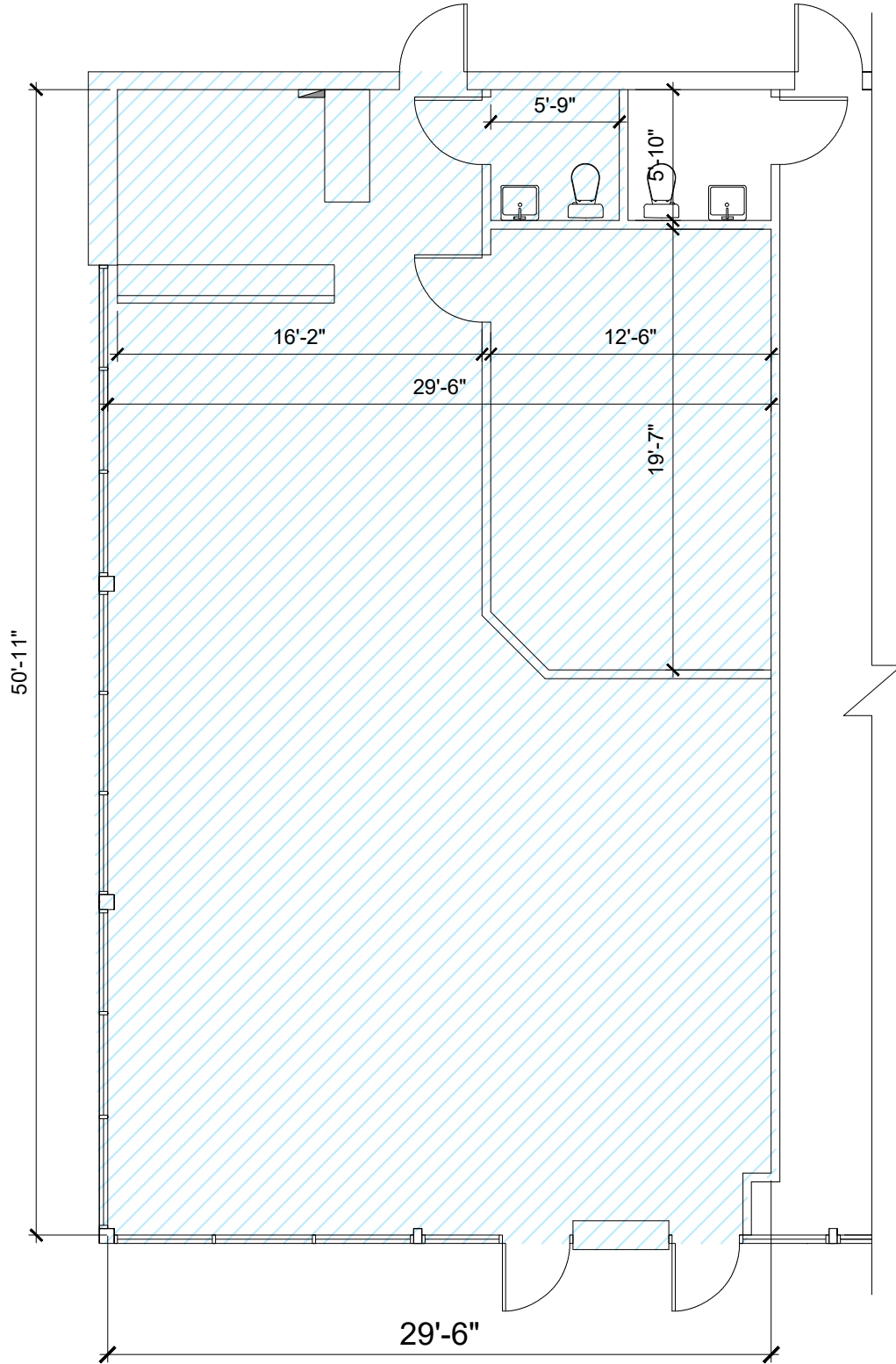
THE ADDISON
SKYWAY MARINA
luxury apartment homes

34th Street S (25,500 AADT)

SITE

The information contained herein was obtained from sources believed reliable; however, RPM Realty Management, LLC makes no guarantees, warranties, or representations as to the completeness or accuracy thereof. The presentation of this property is submitted subject to errors, omissions, change of price or conditions prior to sale or lease, or withdrawal without notice.





1,530 Total SF

The information contained herein was obtained from sources believed reliable; however, RPM Realty Management, LLC makes no guarantees, warranties, or representations as to the completeness or accuracy thereof. The presentation of this property is submitted subject to errors, omissions, change of price or conditions prior to sale or lease, or withdrawal without notice.

