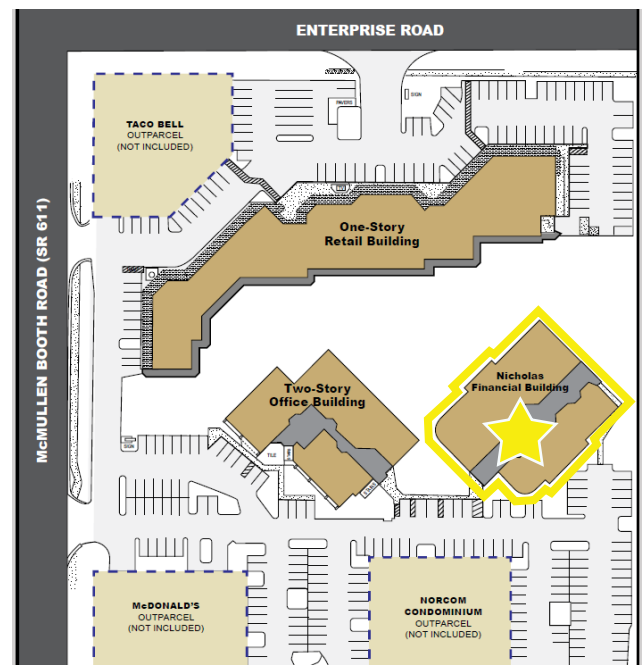




2,450 SF OFFICE SPACE AVAILABLE FOR LEASE

Property Information

- SEC McMullen Booth Road and Enterprise Road
- Strategically located between SR 60 and SR 580
- First floor end unit for lease
- Within close proximity to Bay Area airports
- Parking Ratio: 4.3/1,000 SF
- 24/7 access
- Located in Countryside, near retail shops, restaurants and services
- Convenient lunch break and “after hours” accessibility

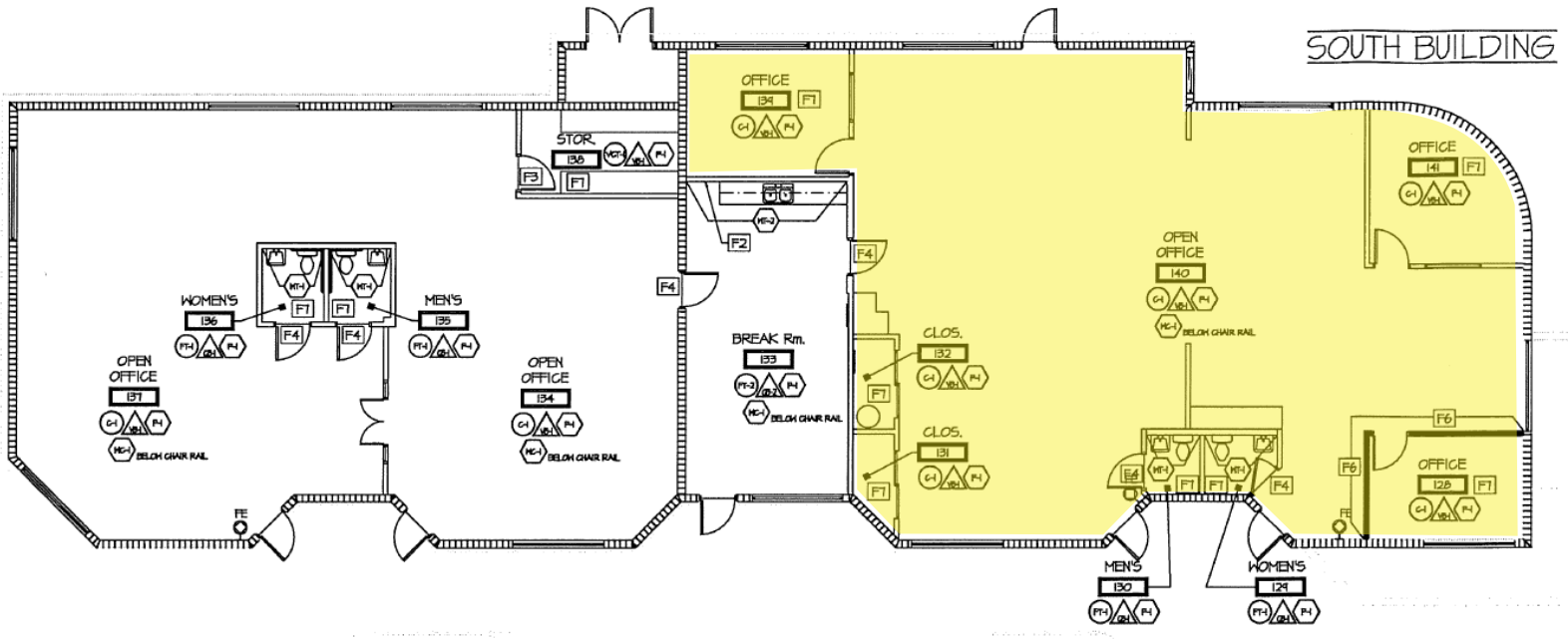


Leasing Contact:

Wanda De Boer | Managing Director - Retail Services
(Cell) 813-690-3020 | (Office) 813-269-0702 | wdeboer@rpm-realty.com

Northwood Commons Bldg C

2454 N McMullen Booth Rd., Clearwater, FL 33759



The information contained herein was obtained from sources believed reliable; however, RPM Realty Management, LLC makes no guarantees, warranties, or representations as to the completeness or accuracy thereof. The presentation of this property is submitted subject to errors, omissions, change of price or conditions prior to sale or lease, or withdrawal without notice.



Northwood Commons Bldg C

2454 N McMullen Booth Rd., Clearwater, FL 33759



The information contained herein was obtained from sources believed reliable; however, RPM Realty Management, LLC makes no guarantees, warranties, or representations as to the completeness or accuracy thereof. The presentation of this property is submitted subject to errors, omissions, change of price or conditions prior to sale or lease, or withdrawal without notice.

