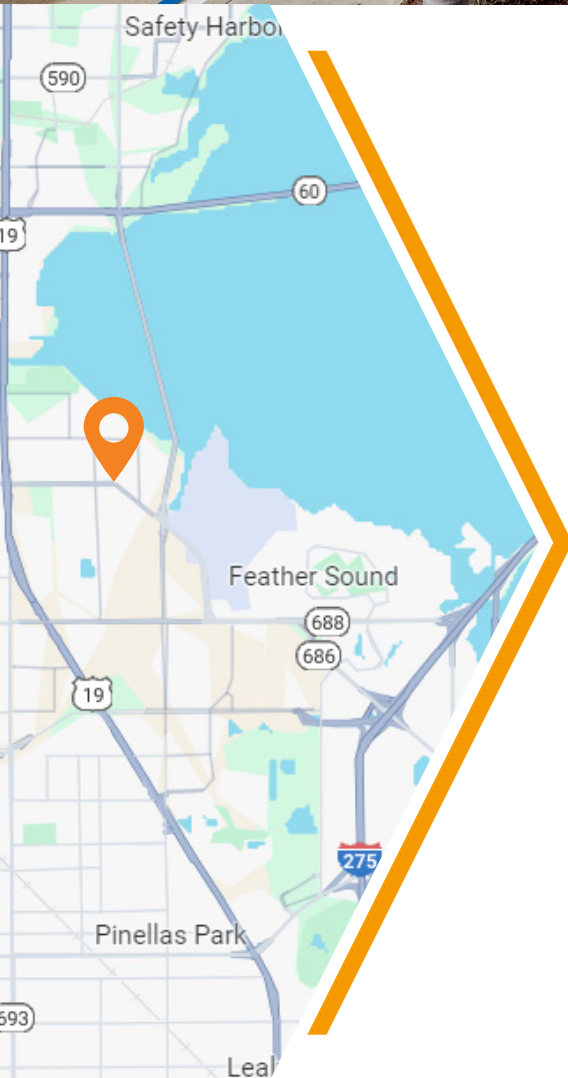


5501-5545 Roosevelt Blvd., Clearwater, FL 33760

**BAY VISTA**

**3,240 SF  
Available**



## 3,240 SF 2ND-GEN MEDICAL SPACE COMING AVAILABLE

- » Close proximity to major retailers including Starbucks, Chipotle, McDonalds, and more
- » Join MÜV Dispensary & Bay Vista Ballroom
- » Strategic location between the Bayside Bridge & US 19
- » Located at the entrance to Bay Vista Business Park with 350,000+ SF
- » Benefits from 39,500 AADT on Roosevelt Blvd
- » Prominent pylon signage

Demographics	1-mile	3-mile	5-mile
2024 Population	10,503	63,611	184,091
Daytime Employment	6,766	51,385	137,590
Average HH Income	\$72,286	\$75,677	\$76,515
Median Age	37.6	45.7	46.1

**Leasing Contact:** Heather McMillin | Senior Vice President, Retail Leasing  
(Office) 813-533-0852 | [hmcmillin@rpm-realty.com](mailto:hmcmillin@rpm-realty.com)



# BAY VISTA

5501-5545 Roosevelt Blvd., Clearwater, FL 33760

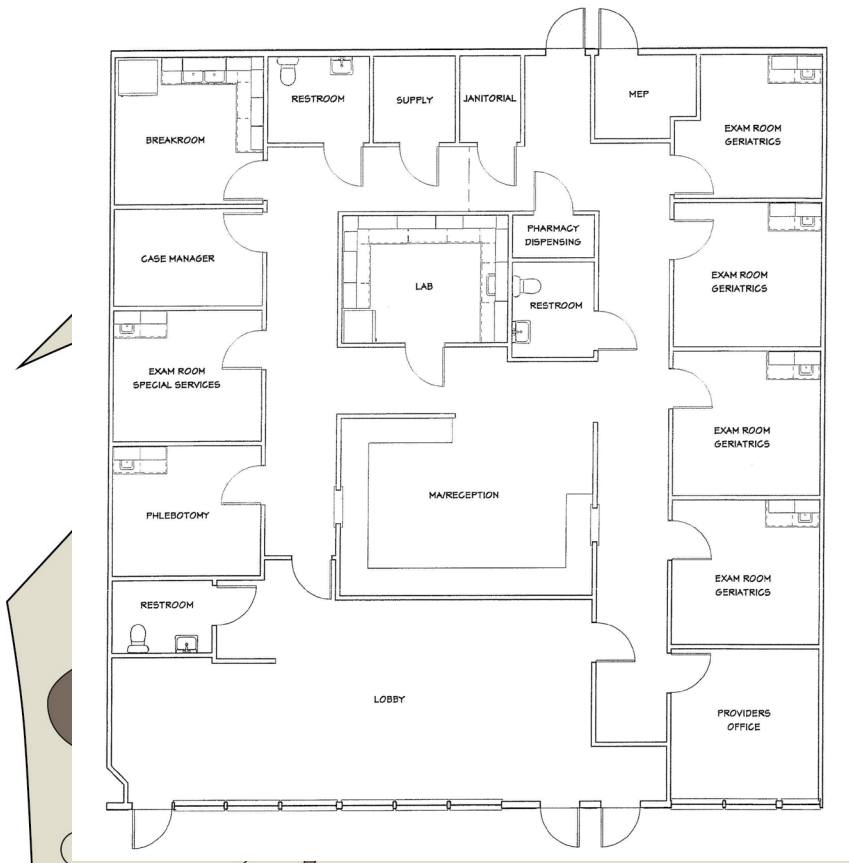


The information contained herein was obtained from sources believed reliable; however, RPM Realty Management, LLC makes no guarantees, warranties, or representations as to the completeness or accuracy thereof. The presentation of this property is submitted subject to errors, omissions, change of price or conditions prior to sale or lease, or withdrawal without notice.

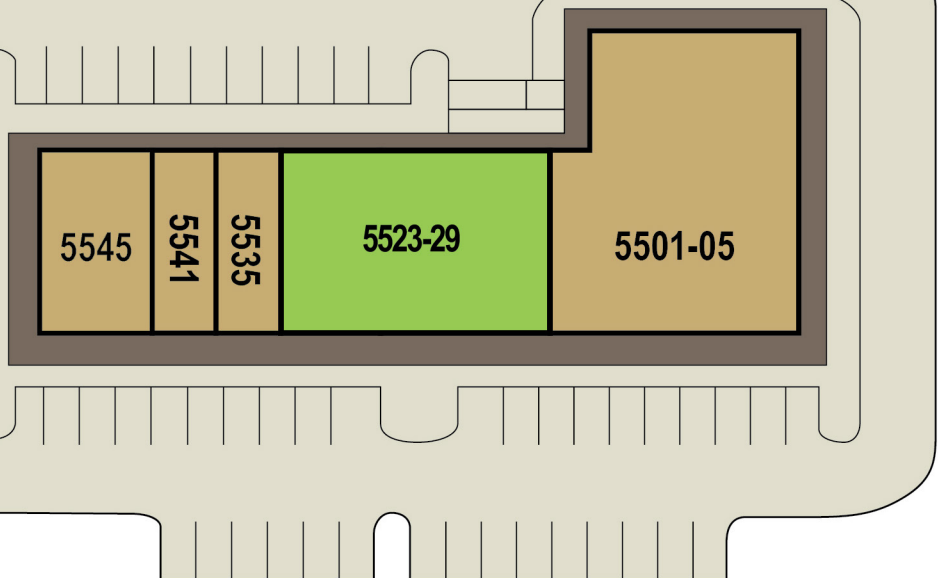


# BAY VISTA

5501-5545 Roosevelt Blvd., Clearwater, FL 33760



SUITE	TENANT	SF
5545	Thai Dish Restaurant	1,530
5541	Bay Vista Ballroom	1,110
5535	Zona Pharmaceuticals	1,053
5523-29	AVAILABLE	3,240
5501-05	Bay Vista Ballroom	6,788



**ROOSEVELT BOULEVARD**

The information contained herein was obtained from sources believed reliable; however, RPM Realty Management, LLC makes no guarantees, warranties, or representations as to the completeness or accuracy thereof. The presentation of this property is submitted subject to errors, omissions, change of price or conditions prior to sale or lease, or withdrawal without notice.

